

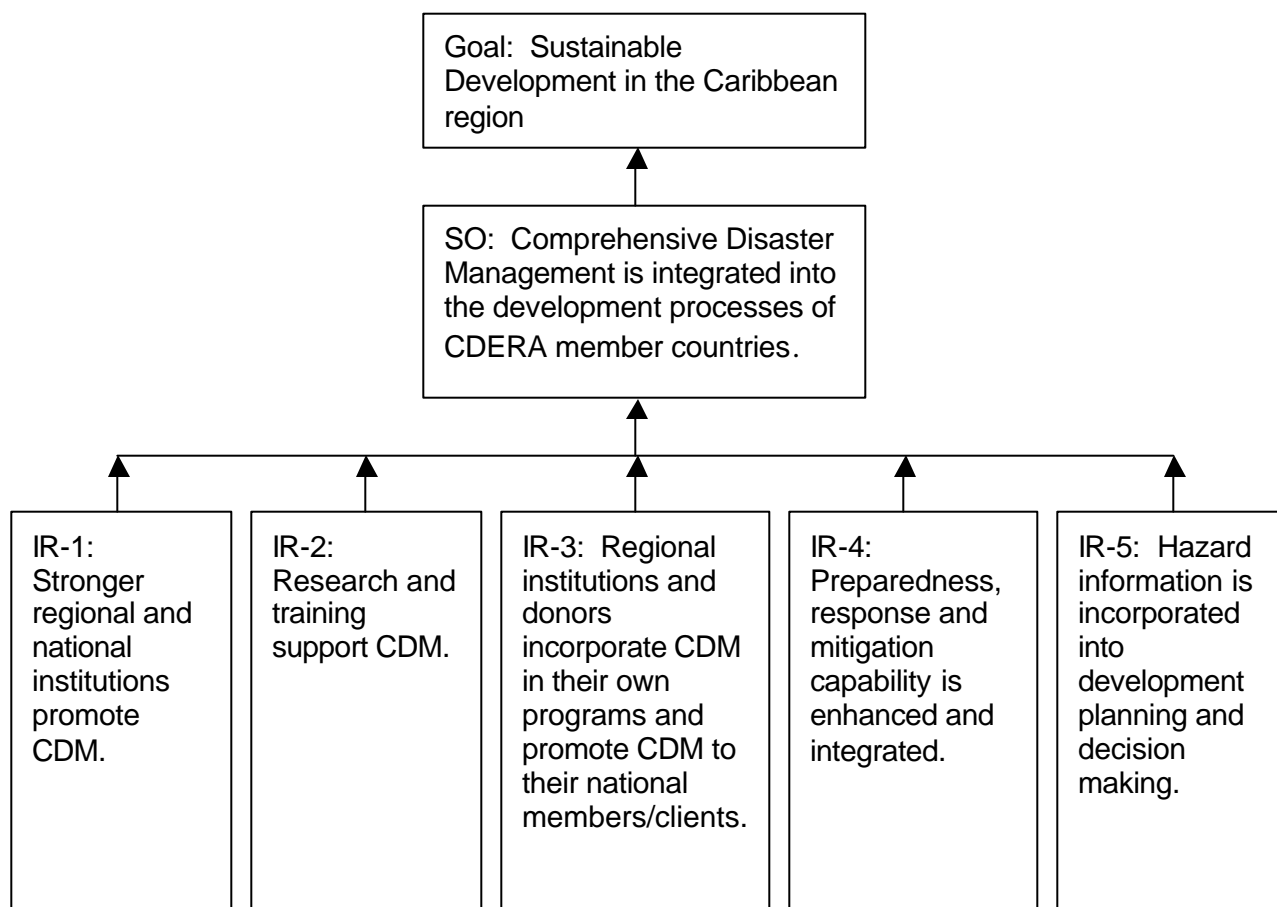
*Comprehensive Approach for Disaster Management in
the Caribbean Project*

STRATEGY AND RESULTS FRAMEWORK

ANNEX I

RESULTS FRAMEWORK

RESULTS FRAMEWORK



Critical Assumptions:

Policy and decision-makers will be receptive to sound information and advice and will support decisions based on technical review criteria.

Funds can be found for heavy up-front costs of infrastructure mitigation measures to gain high long-term benefits.

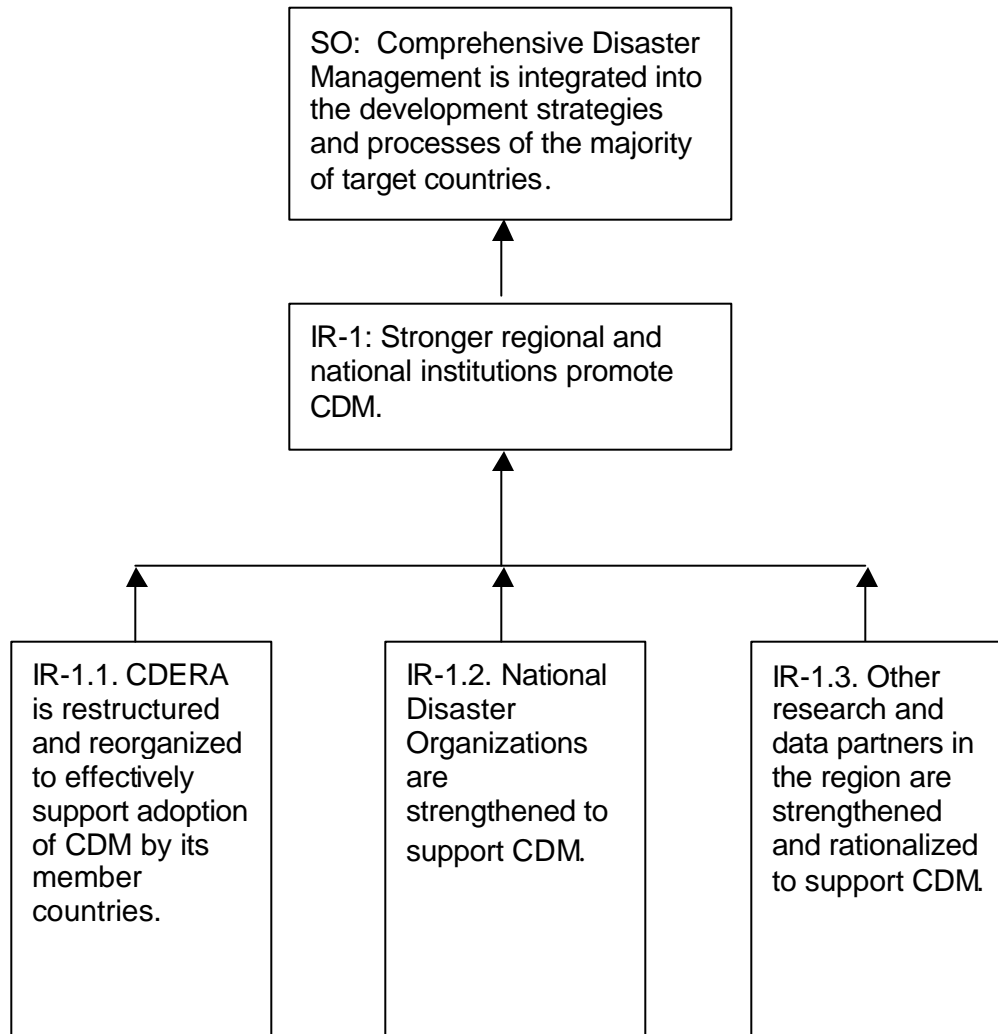
Educational institutions have absorptive capacity and can obtain funds for CDM programs.

Human resources needed for the program will be available.

Comprehensive Disaster Management Strategy

EXPANDED RESULTS FRAMEWORK

IR-1



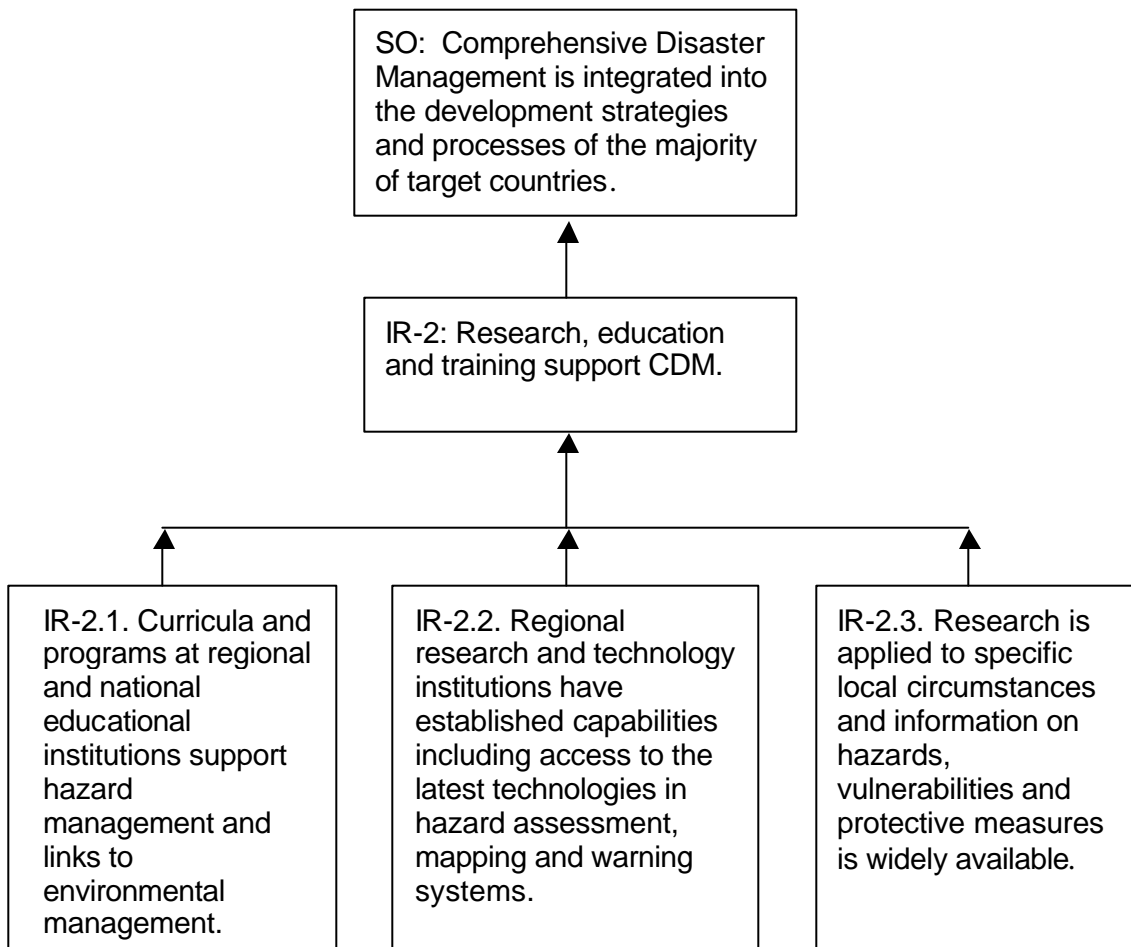
Critical Assumptions:

- All member states will agree to revising CDERA's mandate and other changes in governance.
- Additional resources can be obtained to fund the expanded operational mandate.
- Country support for the NDO, including provision of necessary financial resources, can be mobilized.

Comprehensive Disaster Management Strategy

Expanded Results Framework

IR-2



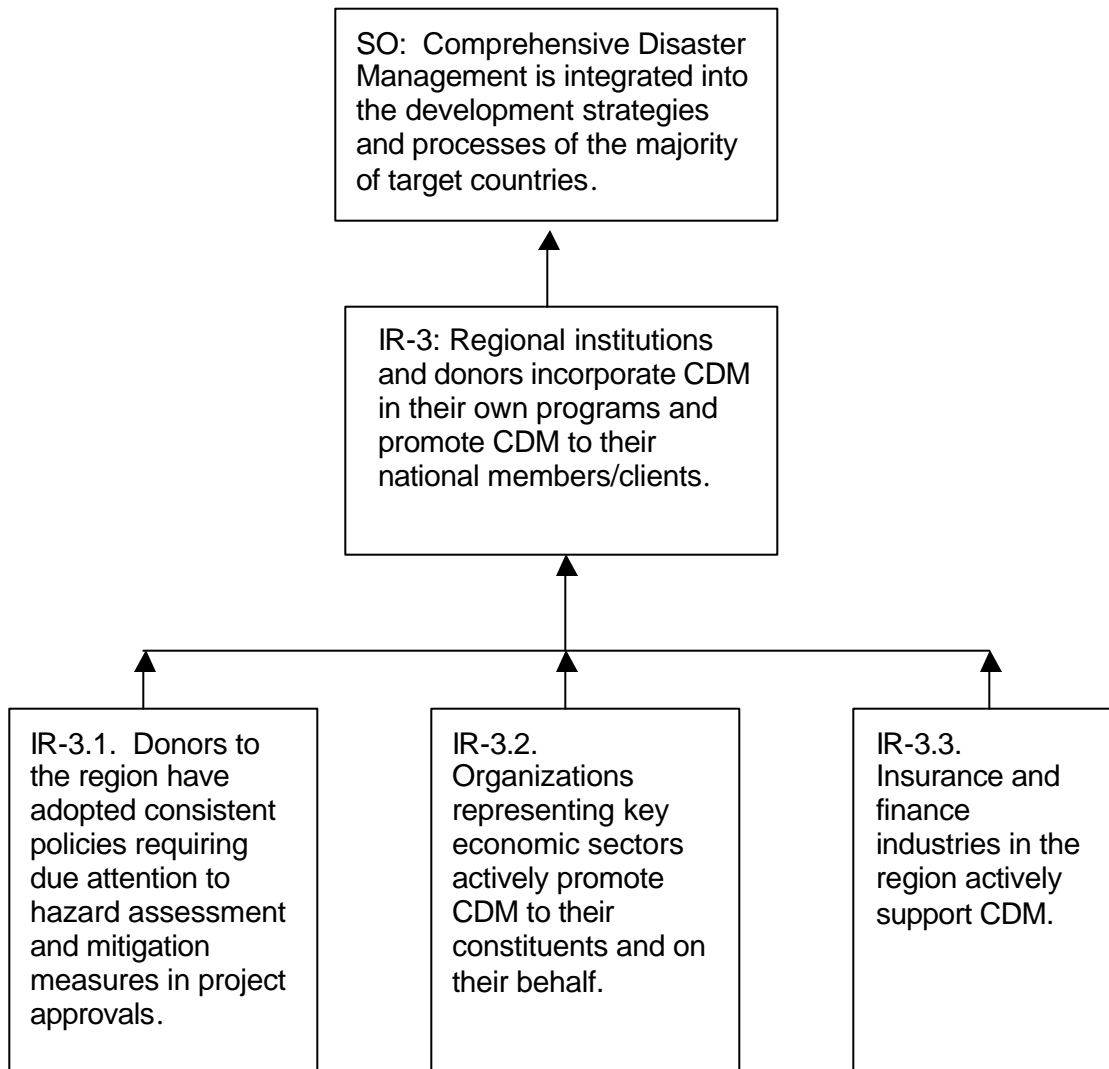
Critical Assumptions:

Educational institutions have absorptive capacity for CDM programs.

Administrators and teachers will be receptive to added responsibility.

**Comprehensive Disaster Management Strategy
Expanded Results Framework**

IR-3

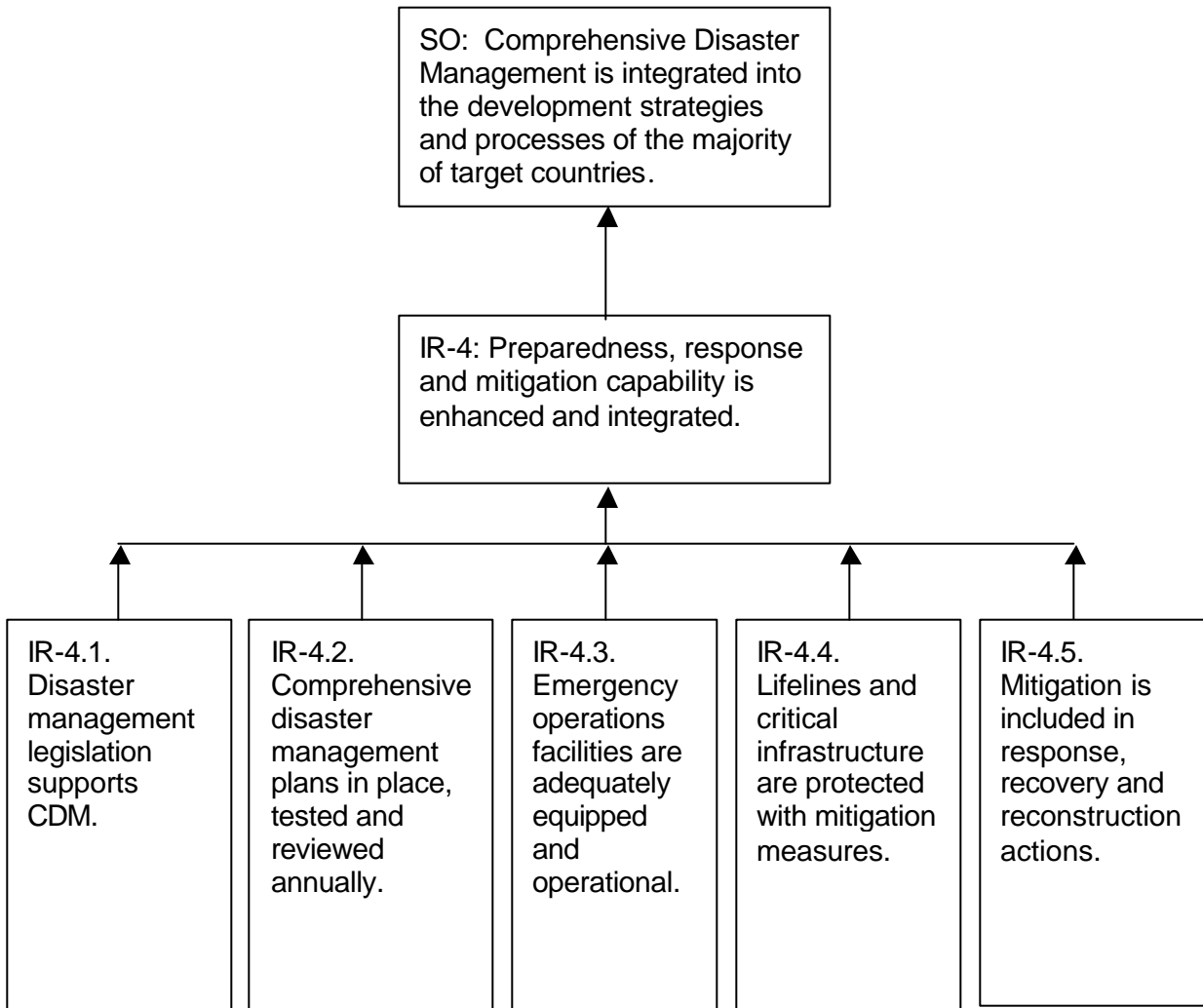


Critical Assumptions:

Comprehensive Approach for Disaster Management in the Caribbean

Expanded Results Framework

IR-4



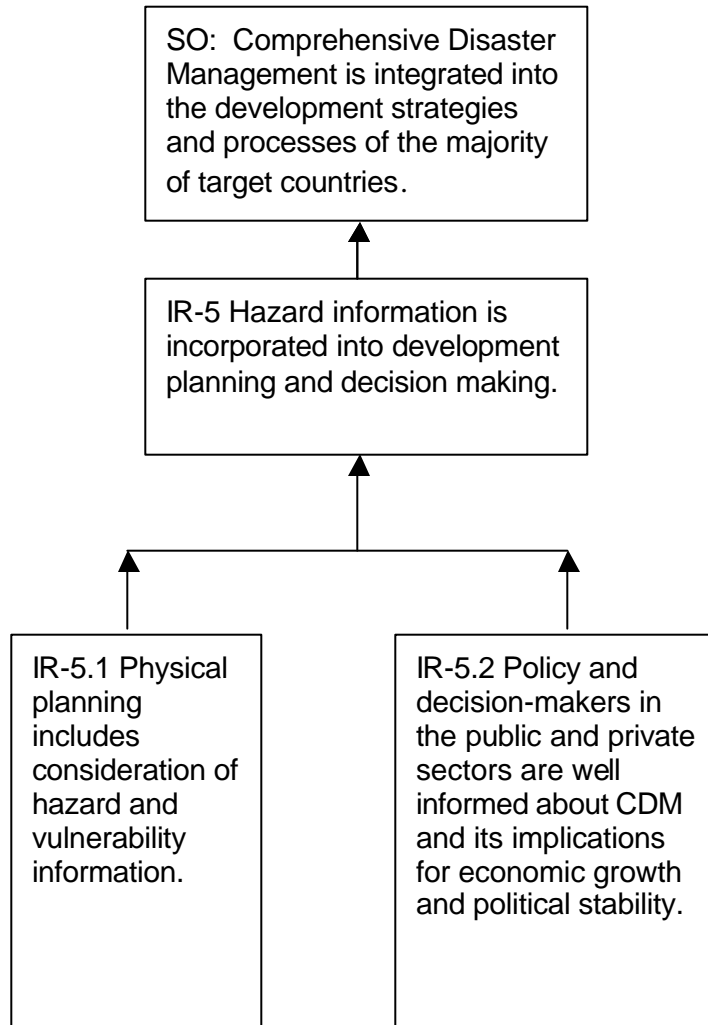
Critical Assumptions:

- Political leadership will support enforcement of safe building practices.
- NDO has sufficient resources to coordinate and manage the dialogue regarding development and integration of disaster planning.
- Funds can be found for the sometimes heavy up front costs.
- Systems to collect, maintain, evaluate and disseminate information regarding disaster impact and support decision making regarding mitigation efforts can be put in place and sustained.

Comprehensive Approach for Disaster Management in the Caribbean

Expanded Results Framework

IR-5



Critical Assumptions:

- Political leaders can be persuaded to limit exceptions and support decisions based on technical review criteria.
- Policy and decision-makers will be receptive to sound information and advice.